

THE SMART HOUSE



by James Grayson Trulove
introduction by Michael McDonough

SMART DESIGN



Francois deMenil Architect
New York, New York

Photography: Paul Warchol

Shorthand House

The Shorthand House seeks to reintroduce basic spatial awareness and potentiality to the suburban domestic environment by translating the linguistic rules of shorthand into a flexible system of symbolic architectural references. The use of shorthand as a conceptual model was suggested by the client's extensive use of the speedwriting technique in her work.

In the Shorthand House, public rooms are not defined by walls but by symbols. Traditional "rooms" are reduced to the components that most clearly distill and represent their function. These elements





serve as symbolic references to potential spatial boundaries within an open living space. The symbols can be joined and related in a variety of ways to achieve differing spatial configurations.

The continuous living space at the ground floor provides a flexible framework for manipulating the interior into a variety of discrete spaces as needed. Within the overall spatial continuity of the building envelope, shorthand “rooms” exist when needed and fold away when not required. Spatial phraseograms link spaces with closely related functions and domestic associations. Each floor comprises a series of phraseograms for living.

The rectilinear volume was chosen for its spatial familiarity and ease of construction. The box’s deceptively simple exterior acts counterpoint to the wealth of potential spatial conditions latent within it.

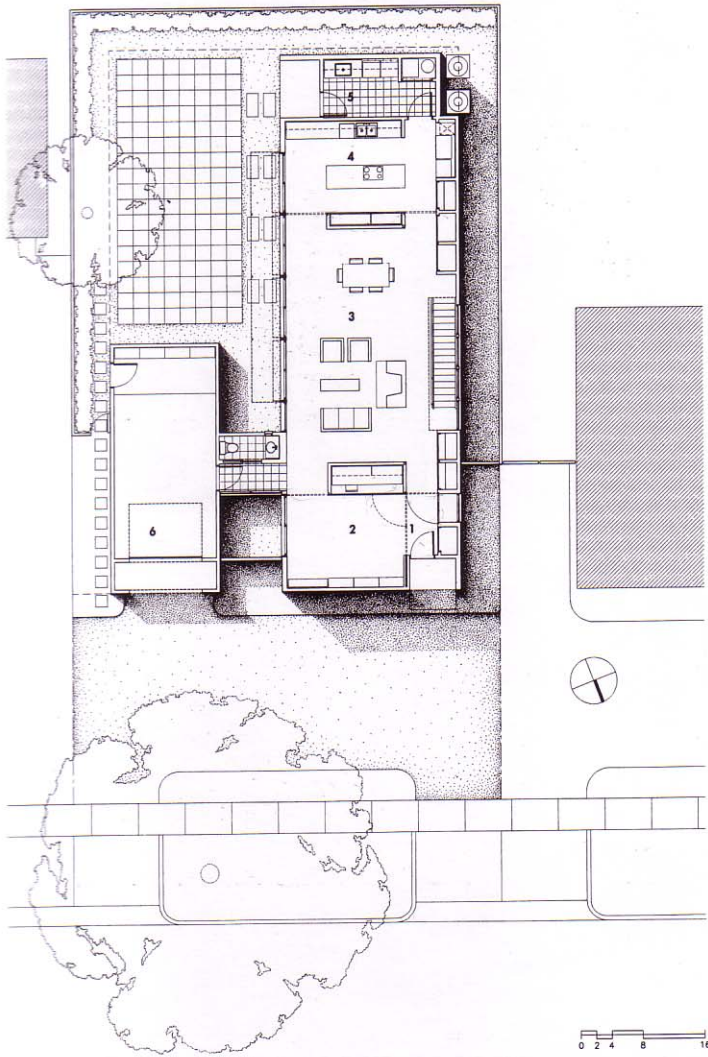
Because the occupant must physically engage the house in order to alter the spatial condition, he or she is, of necessity, simultaneously engaged in understanding the meaning and experience of space and architecture.





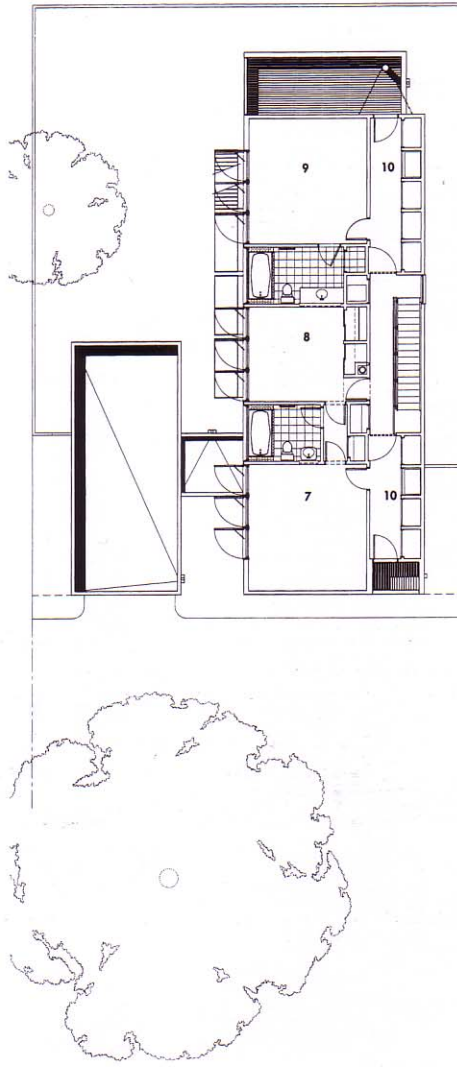
Previous pages, the west façade of the house showing the entrance. Left and above, the east façade overlooking the courtyard. The shutters on the second floor allow for privacy and light control while the narrow band of windows above remain uncovered.

FIRST FLOOR PLAN



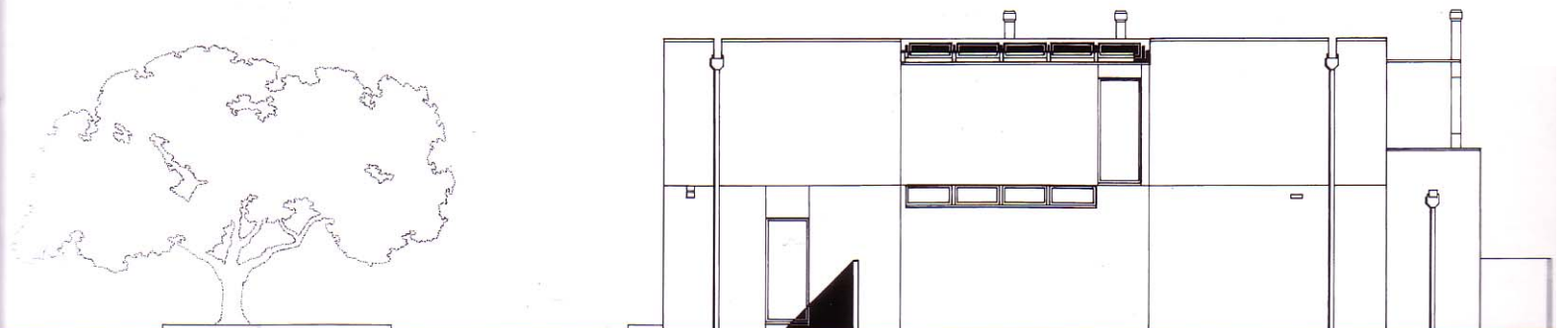
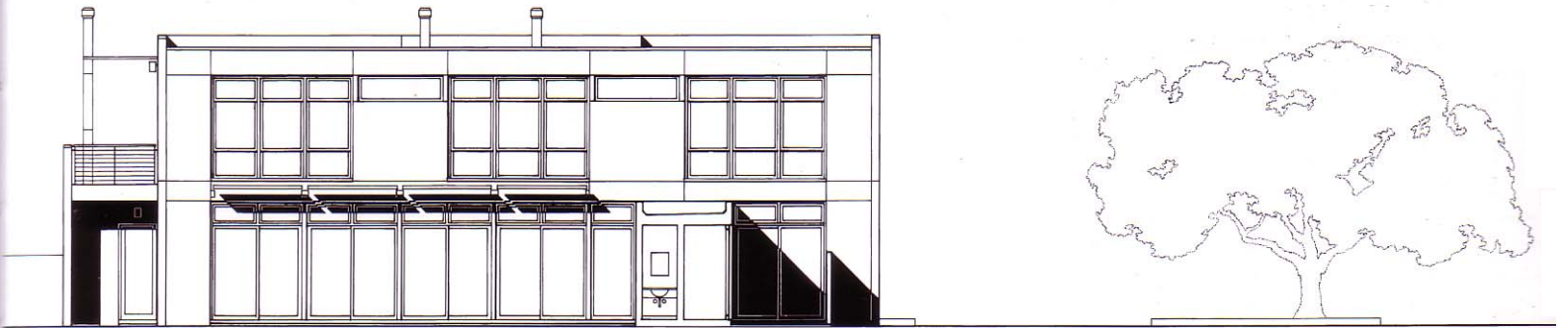
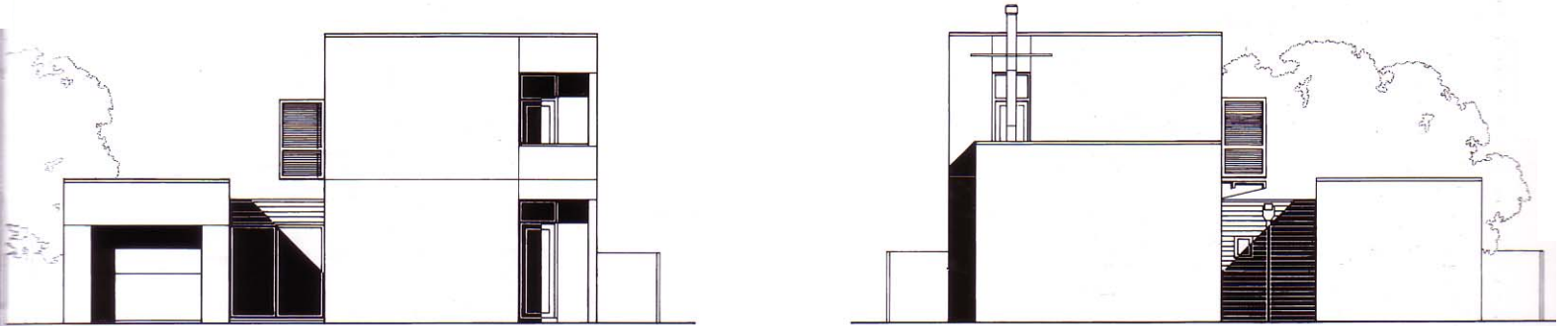
- 1 Entry
- 2 Shorthand Foyer/Study
- 3 Living/Dining Area
- 4 Kitchen/Shorthand Pantry
- 5 Laundry
- 6 Garage

SECOND FLOOR PLAN

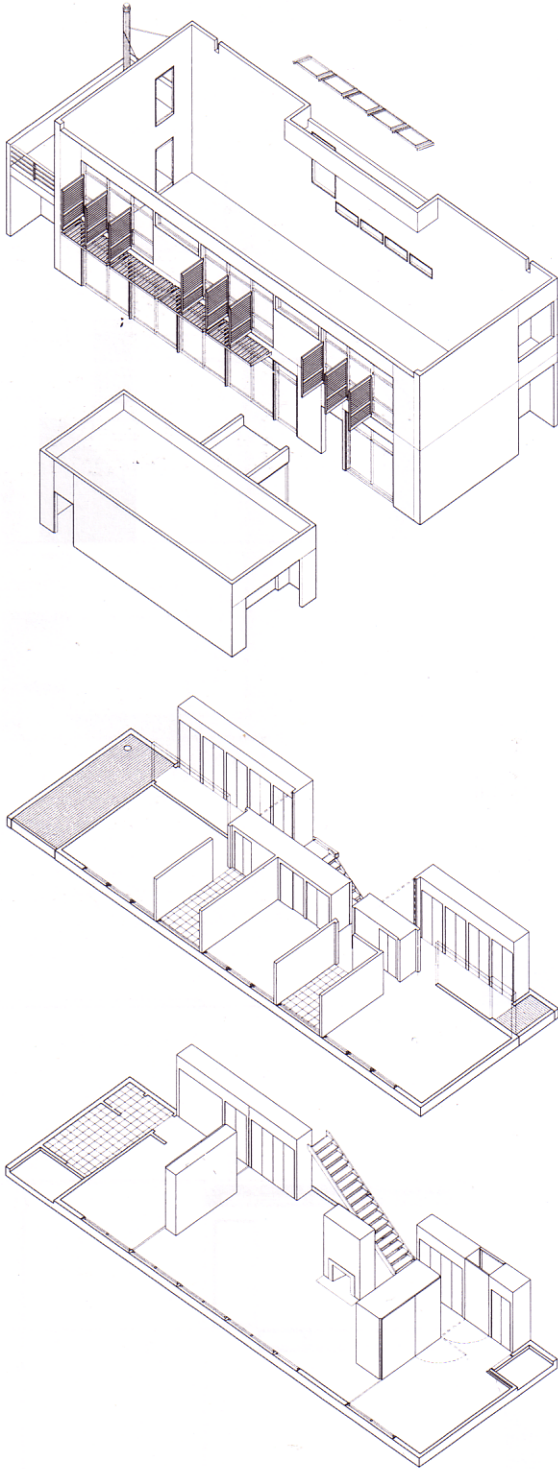


- 7 Bedroom
- 8 Bedroom/Shorthand Sitting Room
- 9 Master Bedroom
- 10 Shorthand Dressing Room/Corridor

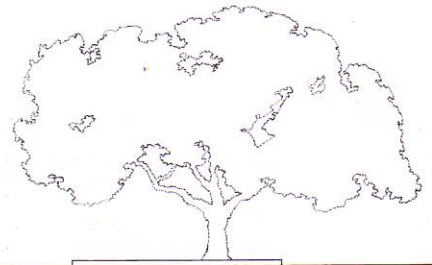
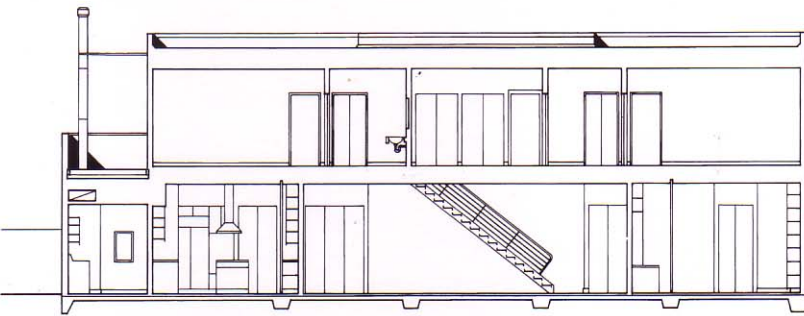
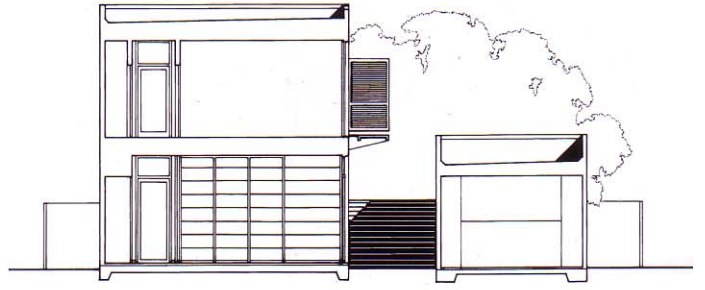
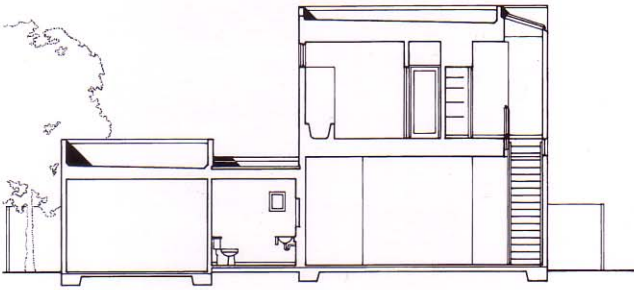
ELEVATIONS



AXONOMETRIC



SECTIONS







Left and above, the heart and soul of the Shorthand House is the "shorthand study" shown in the closed and open positions, respectively. In the open position, it becomes a private retreat from the rest of the house. When open, the first floor is like a large open loft. The kitchen can similarly be closed off, with the kitchen pantry, visible on the left, operating much like the study.





Left, a view from the kitchen along the transparent east wall towards the study. Above, the kitchen.



Above and above right, a narrow band of windows the thickness of the floor sandwich provide light along the "opaque" side of the house. Skylights provide additional light for this side of the house and the staircase. Right, the master bedroom. Following pages, a view from the courtyard at dusk when the transparency of the house is most apparent.





